



# MaxiK $\alpha$ Polyclonal Antibody

<b>Catalog No</b>	YP-Ab-16463
<b>Isotype</b>	IgG
<b>Reactivity</b>	Human;Mouse;Rat
<b>Applications</b>	WB;IHC;IF;ELISA
<b>Gene Name</b>	KCNMA1
<b>Protein Name</b>	Calcium-activated potassium channel subunit alpha-1
<b>Immunogen</b>	The antiserum was produced against synthesized peptide derived from human MaxiK $\alpha$ . AA range:721-770
<b>Specificity</b>	MaxiK $\alpha$ Polyclonal Antibody detects endogenous levels of MaxiK $\alpha$ protein.
<b>Formulation</b>	Liquid in PBS containing 50% glycerol, 0.5% BSA and 0.02% sodium azide.
<b>Source</b>	Polyclonal, Rabbit,IgG
<b>Purification</b>	The antibody was affinity-purified from rabbit antiserum by affinity-chromatography using epitope-specific immunogen.
<b>Dilution</b>	WB: 1/500 - 1/2000. IHC: 1/100 - 1/300. ELISA: 1/40000.. IF 1:50-200
<b>Concentration</b>	1 mg/ml
<b>Purity</b>	≥90%
<b>Storage Stability</b>	-20°C/1 year
<b>Synonyms</b>	KCNMA1; KCNMA; SLO; Calcium-activated potassium channel subunit alpha-1; BK channel; BKCA alpha; Calcium-activated potassium channel; subfamily M subunit alpha-1; K(VCA)alpha; KCa1.1; Maxi K channel; MaxiK; Slo-alpha; Slo1; Slowpoke homolog
<b>Observed Band</b>	137kD
<b>Cell Pathway</b>	Cell membrane ; Multi-pass membrane protein .
<b>Tissue Specificity</b>	Widely expressed. Except in myocytes, it is almost ubiquitously expressed.
<b>Function</b>	alternative products:May be partially controlled by hormonal stress. Additional isoforms seem to exist,disease:Defects in KCNMA1 are the cause of generalized epilepsy and paroxysmal dyskinesia (GEPD) [MIM:609446]. Epilepsy is one of the most common and debilitating neurological disorders. Paroxysmal dyskinesias are neurological disorders characterized by sudden, unpredictable, disabling attacks of involuntary movement often requiring life-long treatment. The coexistence of epilepsy and paroxysmal dyskinesia in the same individual or family is an increasingly recognized phenomenon. Patients manifest absence seizures, generalized tonic-clonic seizures, paroxysmal nonkinesigenic dyskinesia, involuntary dystonic or choreiform movements. Onset is usually in childhood and patients may have seizures only, dyskinesia only, or



both.,domain:The calcium bowl constitutes one of the Ca(2+) sensors an

**Background**

potassium calcium-activated channel subfamily M alpha 1(KCNMA1) Homo sapiens MaxiK channels are large conductance, voltage and calcium-sensitive potassium channels which are fundamental to the control of smooth muscle tone and neuronal excitability. MaxiK channels can be formed by 2 subunits: the pore-forming alpha subunit, which is the product of this gene, and the modulatory beta subunit. Intracellular calcium regulates the physical association between the alpha and beta subunits. Alternatively spliced transcript variants encoding different isoforms have been identified. [provided by RefSeq, Jul 2008],

**matters needing attention**

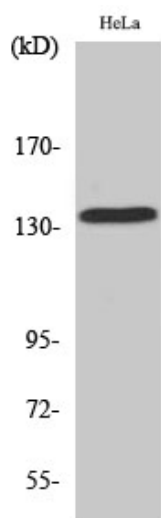
Avoid repeated freezing and thawing!

**Usage suggestions**

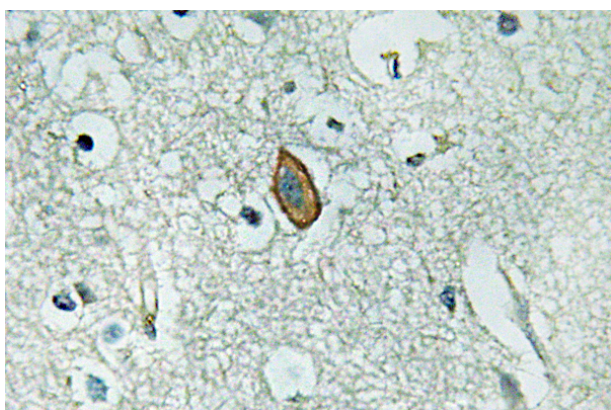
This product can be used in immunological reaction related experiments. For more information, please consult technical personnel.



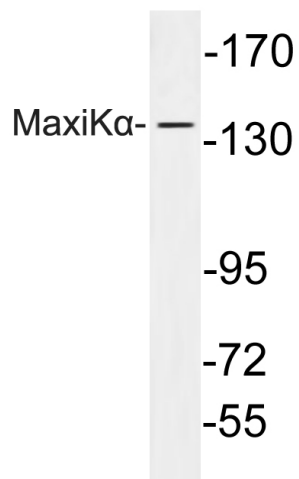
## Products Images



Western Blot analysis of various cells using MaxiKα Polyclonal Antibody



Immunohistochemistry analysis of MaxiKα antibody in paraffin-embedded human brain tissue.



Western blot analysis of lysate from HeLa cells, using MaxiKα antibody.